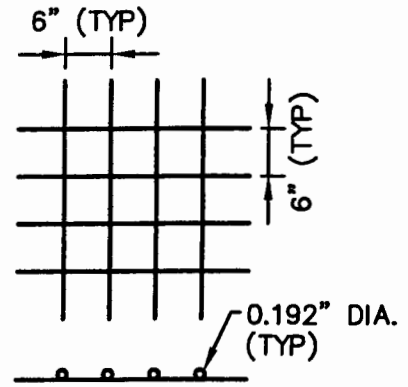


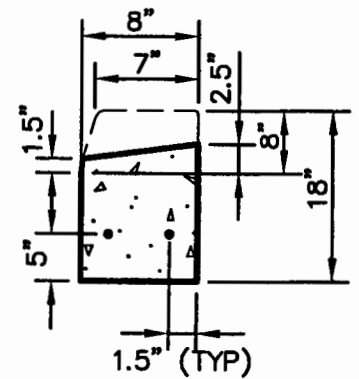
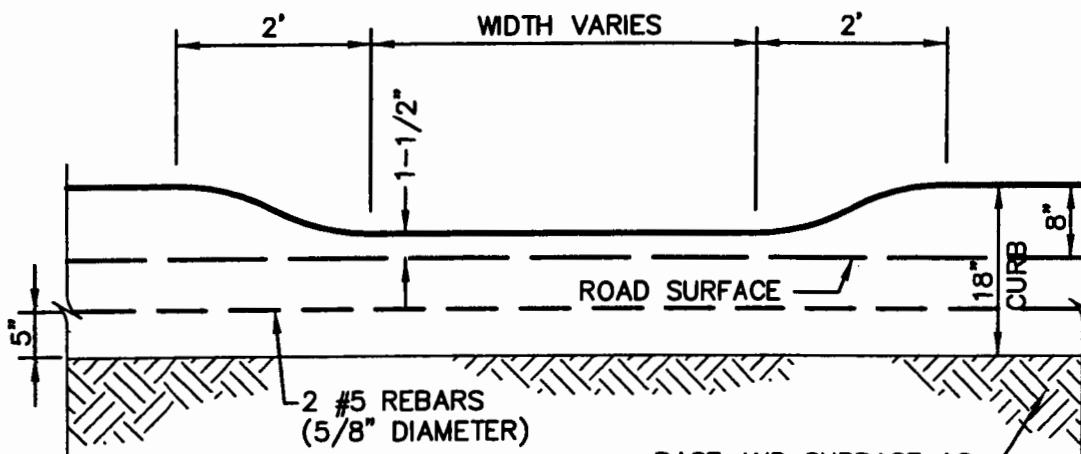
**SIDEWALK REINFORCEMENT
PLACEMENT**



WELDED WIRE FABRIC

NOTES:

1. DEPRESSED CURB LOCATIONS TO BE CORRELATED TO EXISTING DRIVEWAYS AND AS REQUESTED BY PROPERTY OWNERS.
 2. EXPANSION MATERIAL SHALL BE PLACED EVERY 20'.
 3. WELDED WIRE FABRIC (WWF) 6x6-W2.9xW2.9 (SEE DETAIL) SHALL BE PLACED IN THE SIDEWALK AT DRIVEWAY LOCATIONS AND THE DEPTH OF SIDEWALK INCREASED TO SIX INCHES (6").
- WWF SHALL BE INSTALLED IN LENGTHS AS LONG AS POSSIBLE
 - LAP ADJOINING PIECES AT LEAST ONE FULL SQUARE AND LACE SPLICES WITH WIRE
 - WWF SHALL BE PROVIDED WITH A MINIMUM OF 2" OF CONCRETE COVER ON ALL SIDES (SEE DETAIL).



BASE AND SUBBASE AS SHOWN ON CONCRETE CURB AND SIDEWALK DETAILS.

TYPICAL DRIVEWAY DEPRESSED CURB

CET Engineering Services
HUNTINGDON, PENNSYLVANIA

DATE	REVISIONS
SCALE NO SCALE	1383.45 DRIVEWAY